

Wednesday, 22 June 2016 No 19

Dear Parents / Guardians

As we come to the end of another term, we farewell some of our staff members and welcome others who will commence on Monday 11<sup>th</sup> July.



**Mrs Robyn Evans** retired from Hillsmeade PS and the Department of Education on 15<sup>th</sup> June. We wish Robyn well and thank her for her contribution to the education of young children.

**Mr Jonathan Swain** has accepted a teaching position at Mt Eliza North PS for terms 3 & 4. I am certain he will enjoy the professional learning experience in another school.

**Ms Yvonne Paltridge's** contract finishes this term and we thank her for stepping into teach Grade 4B at short notice.

We welcome the following new teachers to our classrooms:

**Mr Scott Masson** (Prep G); **Ms Ema Garic** (Grade 2B); **Mr Bill Peperkamp** (Grade 4B).

I would also like to congratulate **Karen Kenny** and **Meagan Straughair** for their successful applications as ongoing Office Administration staff.



The grade 6 students showcased their Family Suitcases last week in the gymnasium. Parents and grandparents were interviewed by the children, heirlooms, items of clothing, jewellery and other family treasures were on display. I wandered around the gym asking as many children as I could one question relating to their family history. What a wonderful way to showcase the array of culture in our school. Well done grade 6 students.



Last week our 20 school leaders and 4 newly selected peer leaders attended the Peer Leader's Training in preparation for the Peer Support Program in Term 3 whereby the 24 students will be working in pairs to facilitate group sessions for the grade 5 students. Throughout the two days, the student leaders learnt skills on working with groups as well as helping younger students. Some of the topics covered include communication, assertiveness, empathy, organization, decision making, problem solving, as well as group facilitation. The training was delivered through meaningful discussions and fun activities which promote self-reflection and allowed the students to practise the skills above. The students were also provided with opportunities to run mock Peer Support sessions in the training and this helped the students feel better equipped and more confident in running the sessions in Term 3. The students walked away feeling excited and are now looking forward to running the sessions in Term 3 with the Grade 5 students. (Mitze Lau, Student Welfare Officer)



Have a wonderful, relaxing and safe break. We look forward to seeing you all back at school on Monday 11<sup>th</sup> July.

*The outcome of a problem solving & group work activity...*

Kind regards, Deborah

# JUNE

24<sup>th</sup>

Crazy Hair & Sock Day  
(Not a free dress day)

Assembly 1:45pm  
Junior Choir

LAST DAY OF SCHOOL  
2:30pm FINISH

# JULY

11<sup>th</sup>

First Day of Term 3

## TERM DATES 2016

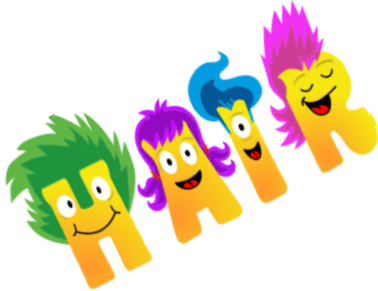
Term Three 11<sup>th</sup> July—16<sup>th</sup> September  
Term Four 3<sup>rd</sup> October—20<sup>th</sup> December

# IT'S COOL TO BE AT SCHOOL

## Think big, dream big

Remember this is the last week of donations of WOOL to Wesley City Mission. The donation basket is located in the OFFICE. All proceeds will be made into scarves and blankets for those less fortunate.

CRAZY HAIR AND SOCK DAY is this FRIDAY (gold coin donation). A lovely way to celebrate the end of Term 2 and with proceeds going to Cancer Research. I hope to see lots of footy socks and amazing hair styles on the day.



Stay safe and drive carefully these school holidays.

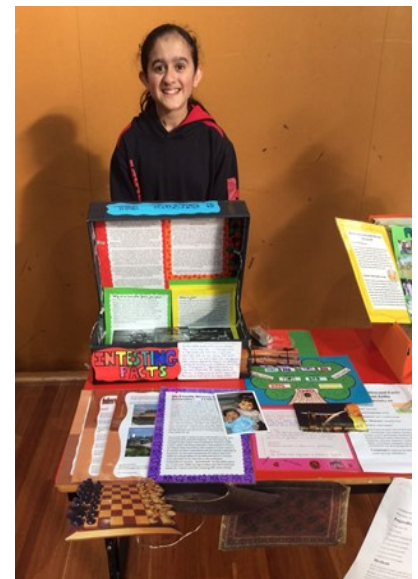
Cannot wait to see you all in Term 3.

Kindest Regards

Inez (HFC President)



## Family Suitcases on display by our grade 6 students



## ADMIN UPDATES

### CSEF

Applications for CSEF have now closed, If your application was denied you would have been advised earlier this term. If you are a CSEF recipients and :-

- would like to use your CSEF for the Year 4 or Year 6 camp please contact the office to advise them. This will reduce the final payment amount required so please check with the office prior to making your final payment.
- your child has an excursion, please write CSEF on the permission slip and return it to school by the due date to indicate that you wish to pay using CSEF, Do not send money.

If you have any queries regarding CSEF please contact Karen Kenny in the office.

### EXCURSIONS

Please make yourself familiar with any payment due dates relating to activities/excursions as we are unable to take any late payments. To ensure that your child does not miss out on an activity/excursion please make your payment by the due date.

### SCHOOL TIMES

A reminder that school finishes at 2.30pm on the last day of the term and at 3.30 on a normal school day. Please arrange to have your child/children collected from school on time each day from the outside class room door. If you are unable to collect your child/children on time please contact the office.

### HILLSMEADE LINK

In an effort to go paperless in term 3 please subscribe to receive the link electronically via the link provided below

[Hillsmeade.vic.edu.au/subscribe](https://hillsmeade.vic.edu.au/subscribe)

### VISION PORTRAITS

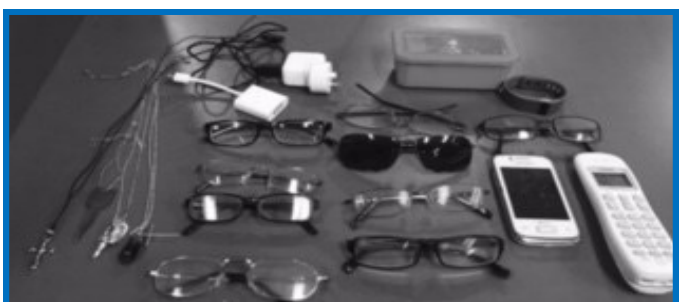
We still have some vision portraits here in the office to be collected.

### LOST PROPERTY

We have a large number of reading glasses and other items held at the office in lost property.

If you believe any of these items belong to you please come to the office.

All items that remain in lost property will be donated / discarded by the end of week 2 in term 3.







# Grade 1 excursion to Melbourne Sea Life Aquarium





Dear Parent or Guardian,

Your child is using Mathletics as part of their maths learning program at school. This means your child has take-home access to Mathletics with their existing school username and password.

The extra Mathletics practice at home can make all the difference in this year's maths test scores. Go for gold!

Sign up for FREE progress updates in 3 easy steps:

- 1 Visit [www.mathletics.com/parent](http://www.mathletics.com/parent)
- 2 Complete the form and click "Submit"
- 3 Look out for a weekly progress email in your inbox each Monday.



Activity	Score	Points	Date Completed
Mathletics - Progression Tests	100	100	21 May 2017
Mathletics - Progression Tests	100	100	21 May 2017
Mathletics - Progression Tests	100	100	21 May 2017
Mathletics - Progression Tests	100	100	21 May 2017
Mathletics - Progression Tests	100	100	21 May 2017
Mathletics - Progression Tests	100	100	21 May 2017
Mathletics - Progression Tests	100	100	21 May 2017
Mathletics - Progression Tests	100	100	21 May 2017
Mathletics - Progression Tests	100	100	21 May 2017
Mathletics - Progression Tests	100	100	21 May 2017



PC & Mac  
Simply visit  
[www.mathletics.com.au](http://www.mathletics.com.au)  
and click "sign in"



Tablet & Mobile  
Download our FREE Student  
App from all  
major app stores

## Parents as Partners

Gains in learning are most prominent when parents and school staff work together to facilitate a supportive learning environment at both home and school.

With this in mind, we have developed a range of resources for both parents and teachers so that we can foster positive parent-teacher relationships that will improve student academic achievement, wellbeing and productivity.

Visit our **Parents as Partners** portal for all the latest news:  
[www.3plearning.com/au/parentsaspartners](http://www.3plearning.com/au/parentsaspartners)



3P Learning

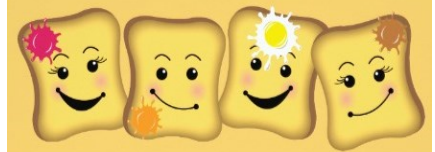
## Parents as Partners Program

It's an important relationship between you, your child and their teacher.

Parents   Students   Teachers

## NOTICES SENT HOME

- Fundraising with Entertainment
- Aussie rules for juniors



Breakfast Club  
will commence again  
Week 2 Term 3

## Preventing head lice

There is no product available that prevents head lice. However, tying long hair back and checking weekly for lice, using the conditioner and comb method, can help prevent the spread.

### Where to get help

- Your doctor
- Pharmacist
- Local government health department
- Public Health, Department of Health Victoria Tel. (03) 9096 0000

### Things to remember

- Head lice have been around for thousands of years and anyone can get them.
- Using the conditioner and comb method once each week will help your family control head lice.
- Head lice do not carry disease.

THE VICTORIAN STATE SCHOOLS

# SPECTACULAR

2016 / THE ELEMENTS

This year, Hillsmeade Primary School have 18 students participating in the massed choir section of the **Victorian State Schools Spectacular: The Elements**. The Spectacular will be held at the Hisense Arena on Saturday 10 September, with two shows at 1pm and 6:30pm. The three-hour Spectacular will be filmed for broadcast by Channel 7.

This program, run by the Department of Education and Training, helps to develop each student's performance skills, discipline, perseverance, cooperation and confidence under the training of industry professionals. Talented young skaters, musicians, dancers and singers will feature on stage, while many other students will work behind the scenes, gaining unique, on-the-job, professional experience.

If you wish to purchase tickets to watch the performance, visit [www.ticketek.com.au](http://www.ticketek.com.au) or phone Ticketek on 132 849.

## HILLSMEADE VISION STATEMENT

*Hillsmeade Primary School is a warm, friendly and diverse learning community where students have opportunities to learn in a manner that is personalised and caters for their interests, needs and strengths. We strive to prepare our students and families for a life of continual learning and we pride ourselves on our unique learning environments. We aim for Hillsmeade students to investigate, communicate and become lifelong learners with curious minds and a bright future.*