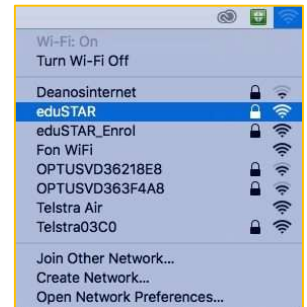


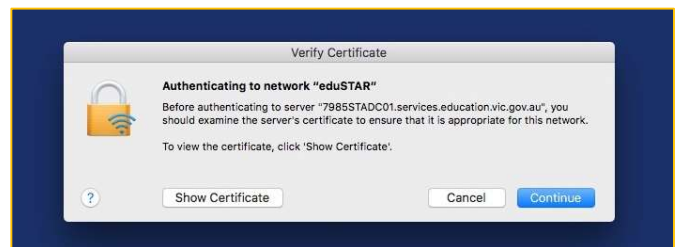
# BYOD PROGRAM – WIRELESS CONNECTION

## CONNECT AN APPLE LAPTOP

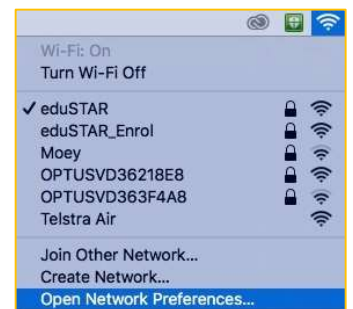
1. Click Wi-Fi and select eduSTAR.
2. Enter your Microsoft 365 email address ([ABCD1234@schools.vic.edu.au](mailto:ABCD1234@schools.vic.edu.au)) and password. **YOUR CLASS TEACHER WILL GIVE THIS TO YOU WHEN YOU ARRIVE AT SCHOOL.**



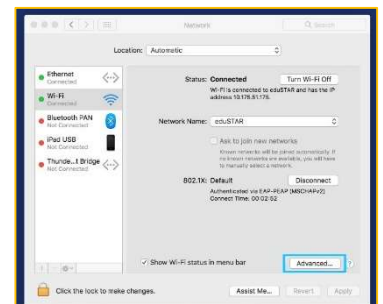
3. Click Continue when asked to verify the certificate.



4. Open Network Preferences.



5. Click on Advanced.



6. Click on Proxy, and then tick Auto Proxy Discovery and click OK. Click Apply and you're now connected.

